

MOTORIZATION · RM25 / 28 / 35 LE / LEC / LET

Remote Pairing & *Motor Setup.*

Pairing · limits · rotation · tilting · favorites · emitters

Companion reference to the Ronco RE500 Hub Setup Guide.

DC Tubular Motor User Manual

Built-in Lithium Battery Electronic Limit(V05)

01 Features

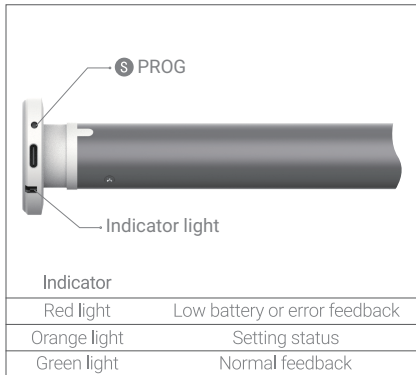
- Remote control ●
- Electronic limit ●
- Preferred stop position ●
- Gentle start gentle stop ●
- Stop while obstructed ●
- Rotation direction switch ●
- Independent dimming ●
- Memorized limits ●
- Adjustable speed ●
- Built-in Lithium battery ●

02 Attention

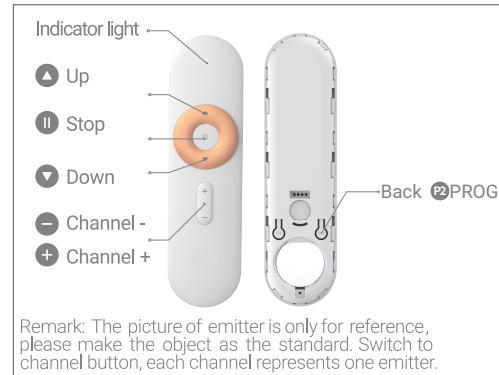
- This product is for indoor use only, do not use in damp environment or outdoors.
- Pay attention to moisture-proof, do not sprinkle water or other liquid on this product.
- Do not place the product near the heat source.
- If the product failure in use, please do not attempt to repair it by yourself, this should be done by an authorized professional.

03 Product description

Motor



Emitter

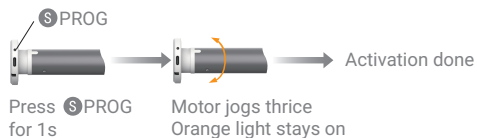


Charging Status Description	Status
Press wireless emitter's ▲ or ▼, the motor indicator GREEN light flashes 2 times.	Charging
Press wireless emitter's ▲ or ▼, the motor indicator GREEN light stays on.	Fully charged
Low battery alert	
Press wireless emitter's any button, the motor indicator RED light flashes 5 times, please charge in time.	

04 Operation steps

Note: Except motor goes up and down, operation success will feedback by motor jogs.

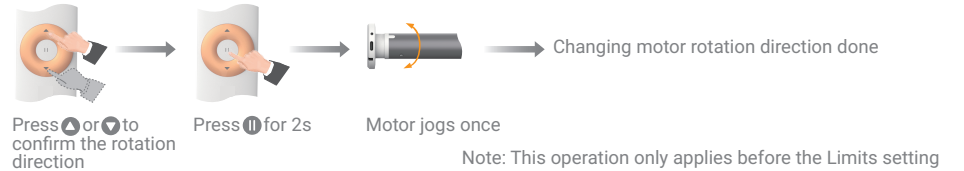
4.1 Activation



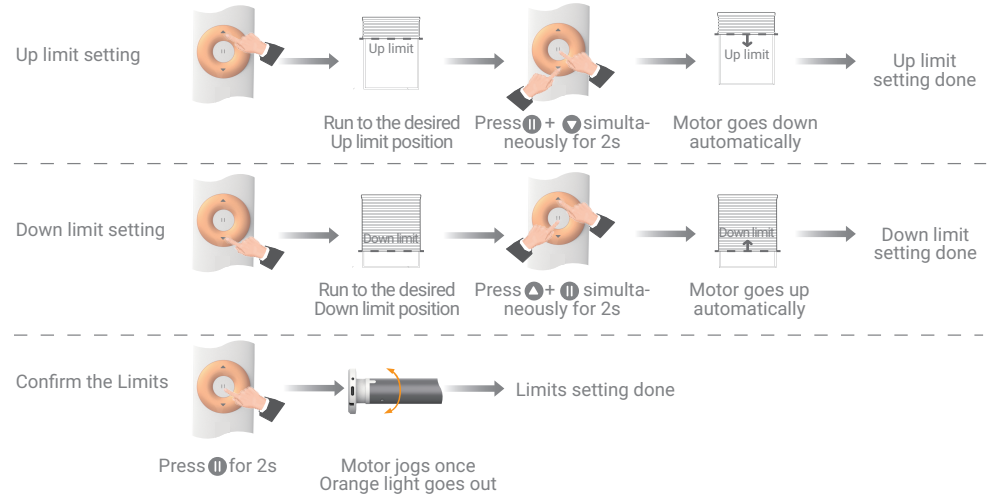
4.2 Pairing



4.3 Change rotation direction

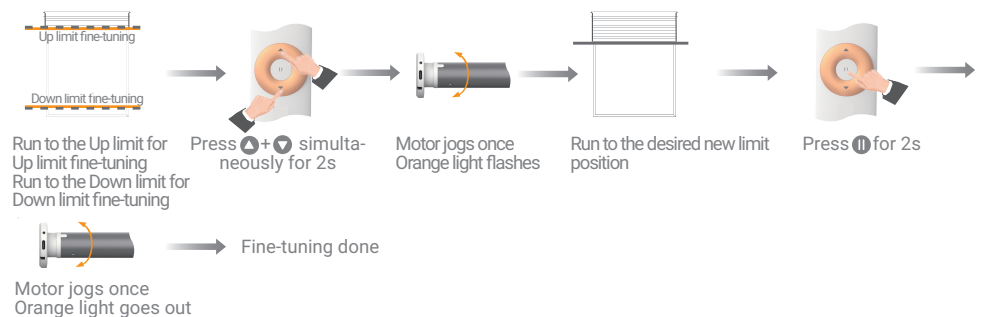


4.4 Limits setting (in Tilting mode now)



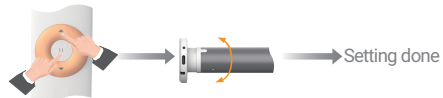
05 Function setting (should be proceeded after Step 04 done)

5.1 Limits fine-tuning



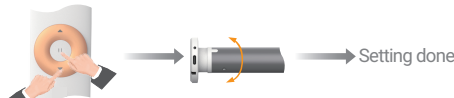
5.2 Speed Adjustment

Set High speed:



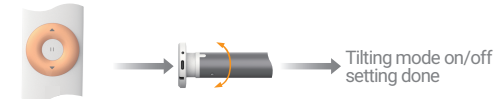
Press ▲ + ⏸ simultaneously for 2s
Motor jogs once

Set Low speed:



Press ⏸ + ▼ simultaneously for 2s
Motor jogs once

5.3 Tilting mode (default is off)



Press ▲ + ⏸ + ▼ simultaneously for 2s
Motor jogs once

Note:

1. When the Tilting mode is off, press ▲ or ▼, the motor runs continuously.
2. When the Tilting mode is on, press ▲ or ▼ for less than 2s, the motor runs continuously.
3. When the Tilting mode is on, press ▲ or ▼ for more than 2s, the motor runs slowly and tilts the slats, release then the motor stops.

5.4 Preferred position setting/deletion (set only between the Up and Down limits)



Run to the desired preferred position
Press ⏸ for 2s
Motor jogs once

Note: When the shade stays in the non-preferred position, briefly press ⏸, the shade will move to the preferred position.

5.5 Adding emitter (each motor can be quipped with 12 emitters maximumly)

Method 1



Press Ⓢ PROG for 2s
Motor jogs once
Orange light flashes
Briefly press the new emitter's back Ⓢ PROG
Motor jogs once
Orange light goes out

Method 2



Press the paired emitter's back Ⓢ PROG for 2s
Motor jogs once
Orange light flashes
Briefly press the new emitter's back Ⓢ PROG
Motor jogs once
Orange light goes out

5.6 Deleting emitter

Operation 1: Delete one by one (if only one emitter remains, it can not be deleted)

Method 1



Press Ⓢ PROG for 2s
Motor jogs once
Orange light flashes
Briefly press the paired emitter's back Ⓢ PROG

Method 2



Press the paired emitter's back Ⓢ PROG for 2s

Motor jogs once
Orange light flashes

Briefly press the paired emitter's back Ⓢ PROG

Motor jogs once
Orange light goes out

Deleting emitter done

Operation 2: Deleting all the emitters



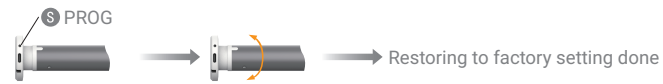
Press Ⓢ PROG for 7s

Motor jogs twice
Orange light flashes

(Note: Adding an emitter after deleting all the emitters, briefly press emitter's back Ⓢ PROG, orange light goes out, adding emitter done)

Deleting all the emitters done

06 Restore to factory setting (if operation error, reset after restoring to factory setting)



Long press Ⓢ PROG for 12s

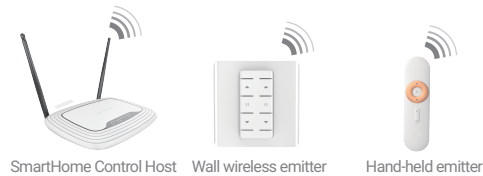
Motor jogs thrice
Orange light stays on

Restoring to factory setting done

07 Applications (Please keep antennas away from metal obstructions during installation or placement to avoid signal interference or block)

Applications 1:

Built-in Lithium battery power supply, rechargeable via solar panel, instead of AC wall socket



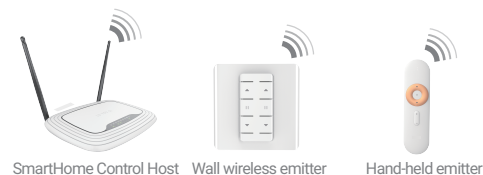
SmartHome Control Host

Wall wireless emitter

Hand-held emitter

Applications 2:

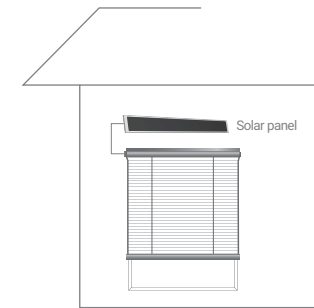
Built-in Lithium battery power supply, recharge via external charger, 4-8 months operation if fully charged



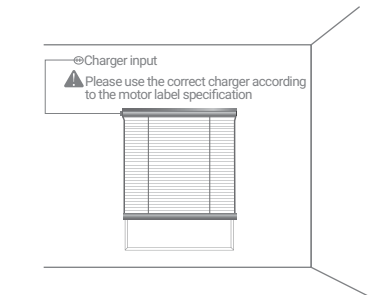
SmartHome Control Host

Wall wireless emitter

Hand-held emitter



Solar panel



Ⓢ Charger input

⚠ Please use the correct charger according to the motor label specification



SUPERIOR

WINDOW COVERINGS

Built for the dealers the big brands forgot.

DEALER SUPPORT

Call your Superior rep for motor pairing walkthroughs and troubleshooting.

CONTACT

hello@superiorwindowcoverings.us
superiorwindowcoverings.us
Mon–Fri · 8am–6pm CT

HUB & APP

Ronco RE500 smart hub.
See the RE500 Hub Setup Guide for app + scenes.